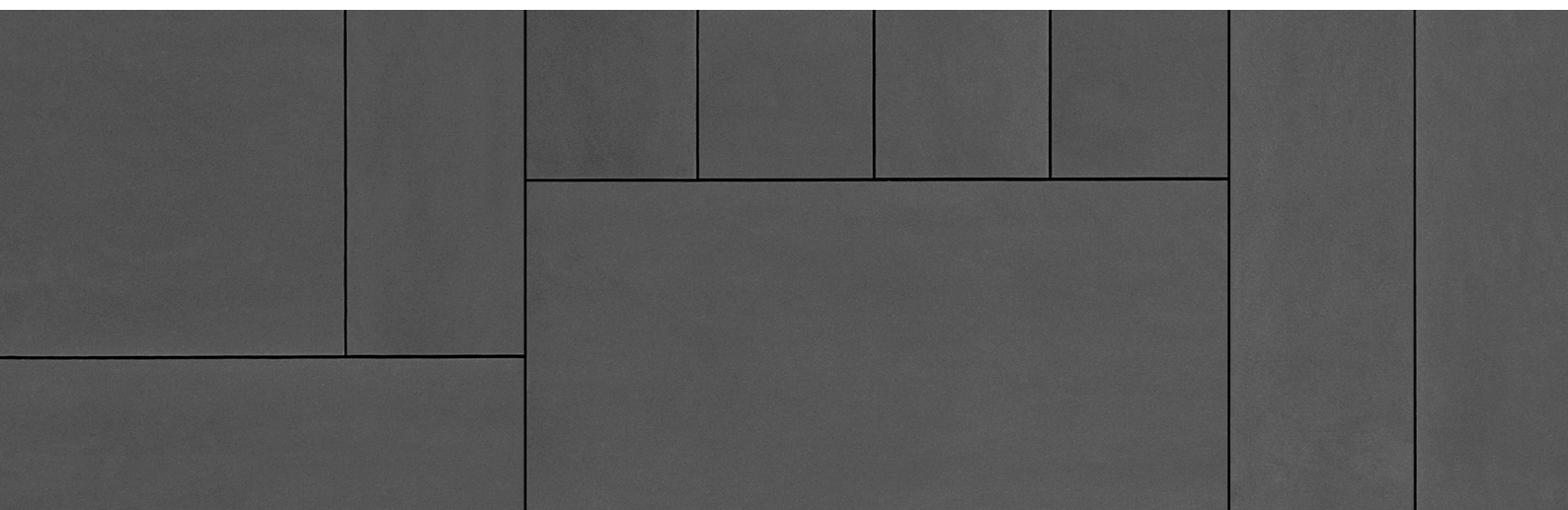




 **EQUITONE**
Fibre cement facade materials

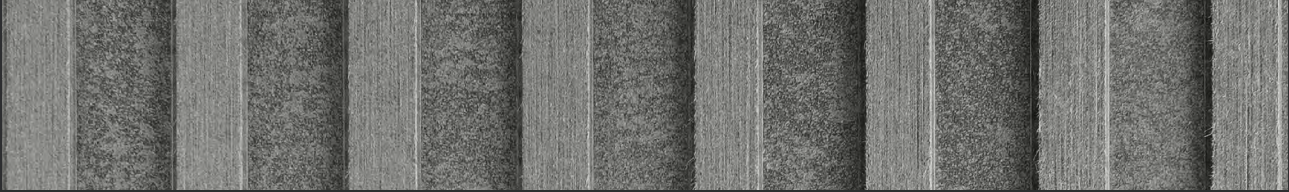
The logo features a square icon on the left, divided into two horizontal sections. The top section has a vertical wood-grain texture, and the bottom section is a solid dark grey. To the right of the icon, the word "EQUITONE" is written in a bold, dark grey, sans-serif font. A small vertical bar is positioned between the icon and the letter "Q". Below the brand name, the text "Fibre cement facade materials" is written in a smaller, lighter grey, sans-serif font.



The logo for EQUITONE features a square icon on the left with a dark, textured background and a vertical white line on the right side. To the right of the icon, the word "EQUITONE" is written in a bold, uppercase, sans-serif font.

EQUITONE

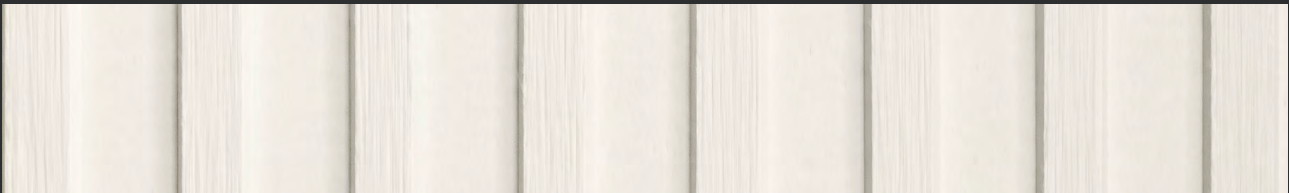
EQUITONE is a through-coloured facade material designed by and for architects. Our company has produced these façade panels since the 1950´s. Every EQUITONE panel is unique, showing the raw, untreated texture of the fibre cement base material. Fibre cement is a cement composite material that consists of cement, cellulose and mineral materials, reinforced by a visible matrix. Nothing else. The EQUITONE material comes in a maximum panel size of 1,25 x 3m (4´ x 10´) and can be transformed into any size or shape in the workshop or on-site. Furthermore, the material can be perforated or printed. Visible and invisible rainscreen fixing methods can be used including riveting, screwing and bonding on metal or wood supporting frames. No matter what design options you explore, the through-coloured nature of EQUITONE assures crisp, monolithic details.



LT20



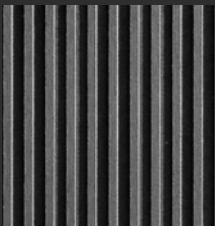
LT60



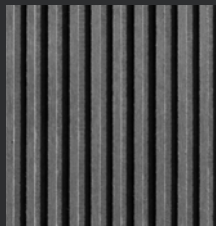
LT90

Shadow effect:

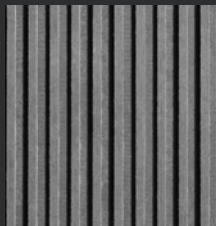
8:00 AM



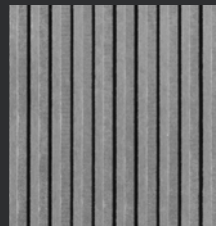
9:00 AM



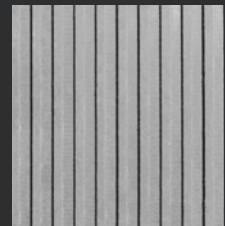
10:00 AM



11:00 AM

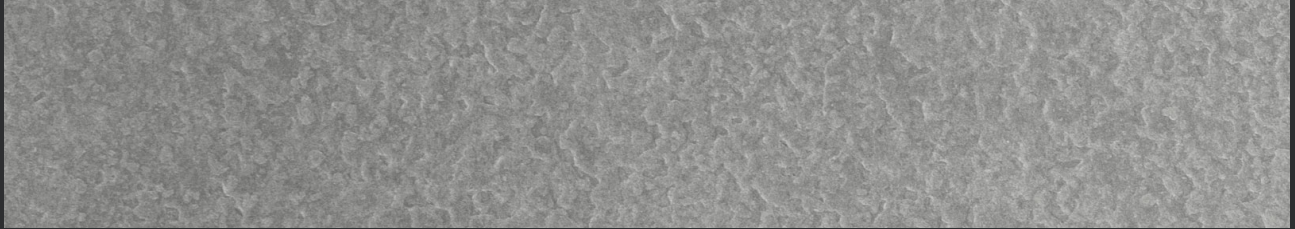


12:00 Midday



EQUITONE [linea]

EQUITONE [linea] is a unique 3D shaped, through-coloured facade material that plays with light and shadow. EQUITONE [linea] displays a linear texture that highlights the raw inner texture of the core fibre cement material. Every moment of the day, the changing angle of the daylight gives the facade material a different aspect. The material comes in a large panel size and can be transformed into any size or shape in the workshop or on site. No matter what design options you explore, EQUITONE's through-coloured nature guarantees crisp, monolithic details. Both visible and invisible fixing options exist for EQUITONE [linea].



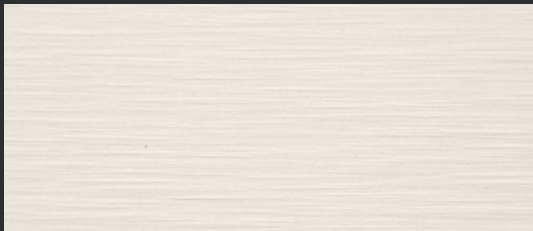
LA 20



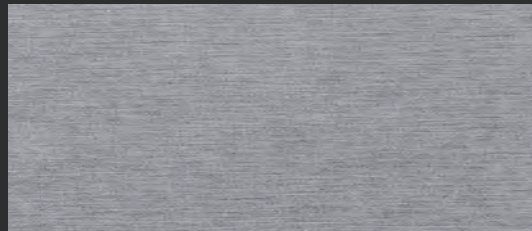
LA 60

EQUITONE [lunara]

EQUITONE [lunara] is a through-coloured fibre cement panel with a surface resembling a lunar landscape that demonstrates the natural quality of fibre cement as a material. The special production process makes each panel unique in terms of its colour, texture and surface, with a pattern that is not repeated. The rough, unpolished surface looks as if it was created naturally and invites you to touch it. The material comes in a large panel size and can be transformed into any size or shape in the workshop or on site. No matter what design options you explore, EQUITONE's through-coloured nature guarantees crisp, monolithic details.



TE90



TE15



TE00



TE20



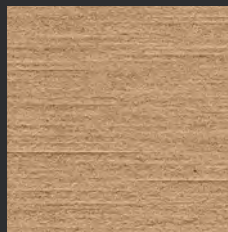
TE10



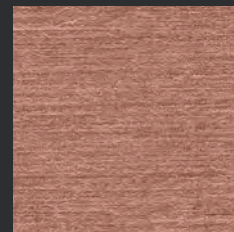
TE85



TE60



TE30



TE40

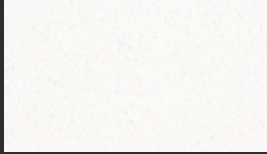
EQUITONE [tectiva]

EQUITONE [tectiva] is a through-coloured facade material, characterised by a sanded surface and naturally occurring hues within the material.

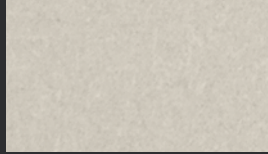
Every tectiva panel is unique, strongly expressing the raw texture of the core fibre cement material. The material comes in a large panel size and can be transformed into any size or shape in the workshop or on site.

No matter what design options you explore, EQUITONE's through-coloured nature guarantees crisp, monolithic details.

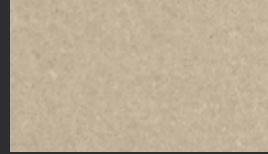
THROUGH-COLOURED



N164



N154



N861



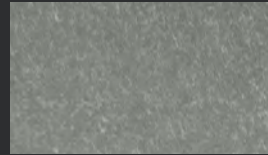
N961



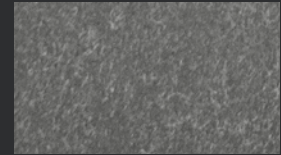
N162



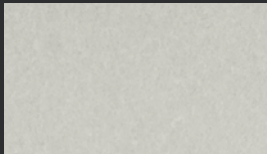
N163



N211



N252



N161



N892



N250



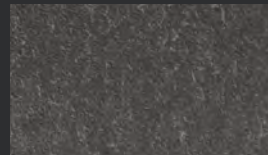
N294



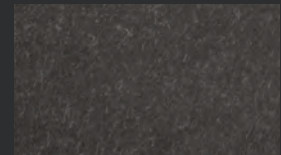
N891



N251

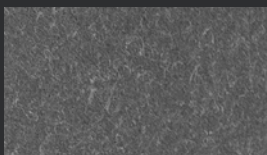


N073

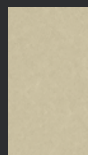


N074

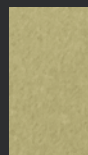
SPECIAL COLOURS



N281



N661



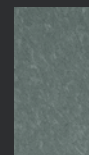
N662



N593



N594



N411



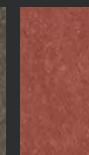
N412



N991



N972



N331

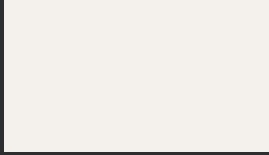


N359

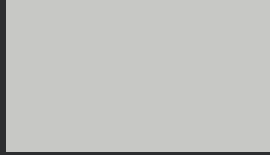
Other colours available on request, subject to minimum order quantities.

EQUITONE [natura]

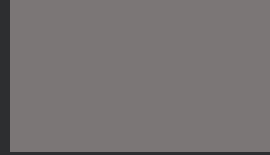
EQUITONE [natura] is a through-coloured facade material. Every EQUITONE [natura] panel is unique, subtly displaying the raw texture of the core fibre cement material. The material comes in a large panel size and can be transformed into any size or shape in the workshop or on site. No matter what design options you explore, EQUITONE's through-coloured nature guarantees crisp, monolithic details.



PW 141



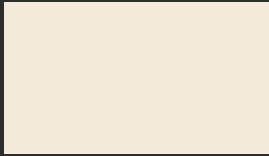
PG 243



PG 241



PA 041



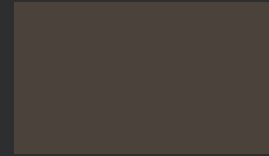
PW 841



PG 843



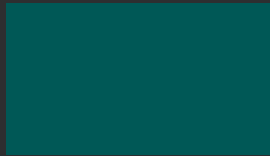
PG 844



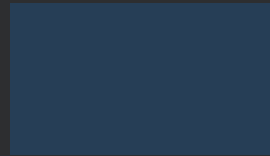
PA 944



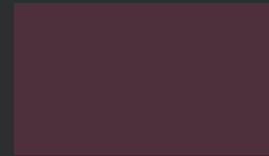
PG 542



PG 546



PG 444



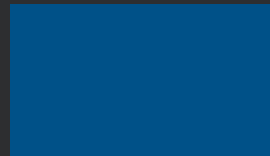
PG 342



PG 642



PG 545



PG 443



PG 341



PG 641



PG 544



PG 442

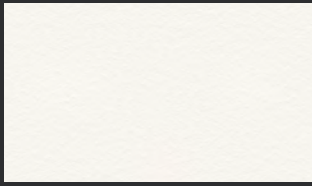


PG 742

Other colours available on request, subject to minimum order quantities.

EQUITONE [pictura]

EQUITONE [pictura] is a fibre cement facade material with an ultra matt architectural finish. Thousands of custom-matched matt project colours are available on request. The material comes in a large panel size and can be transformed into any size or shape in the workshop or on site. The material can also be perforated or printed. No matter what design options you explore, EQUITONE material is ideal for crisp detailing.



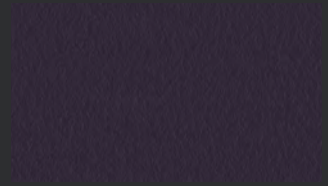
TG 102



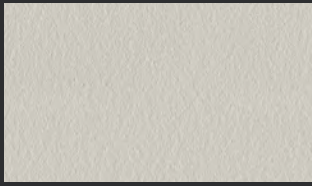
TA 409



TA 003



TA 309



TG 205



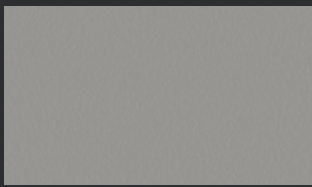
TG 408



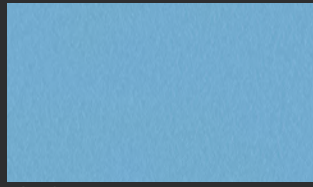
TA 507



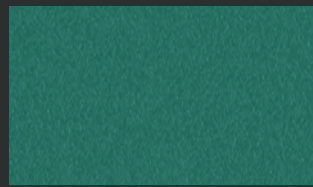
TA 304



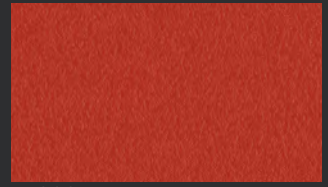
TG 206



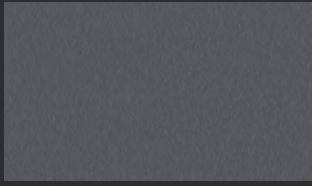
TG 407



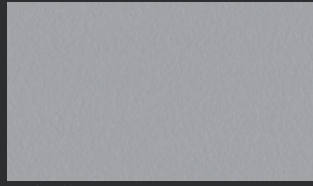
TA 508



TA 308



TT 207



TT 210



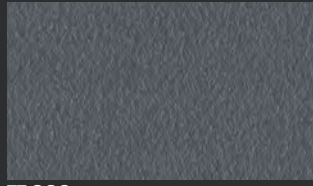
TG 506



TG 702



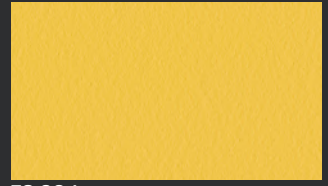
TA 001



TT 209



TG 505



TG 604

EQUITONE [textura]

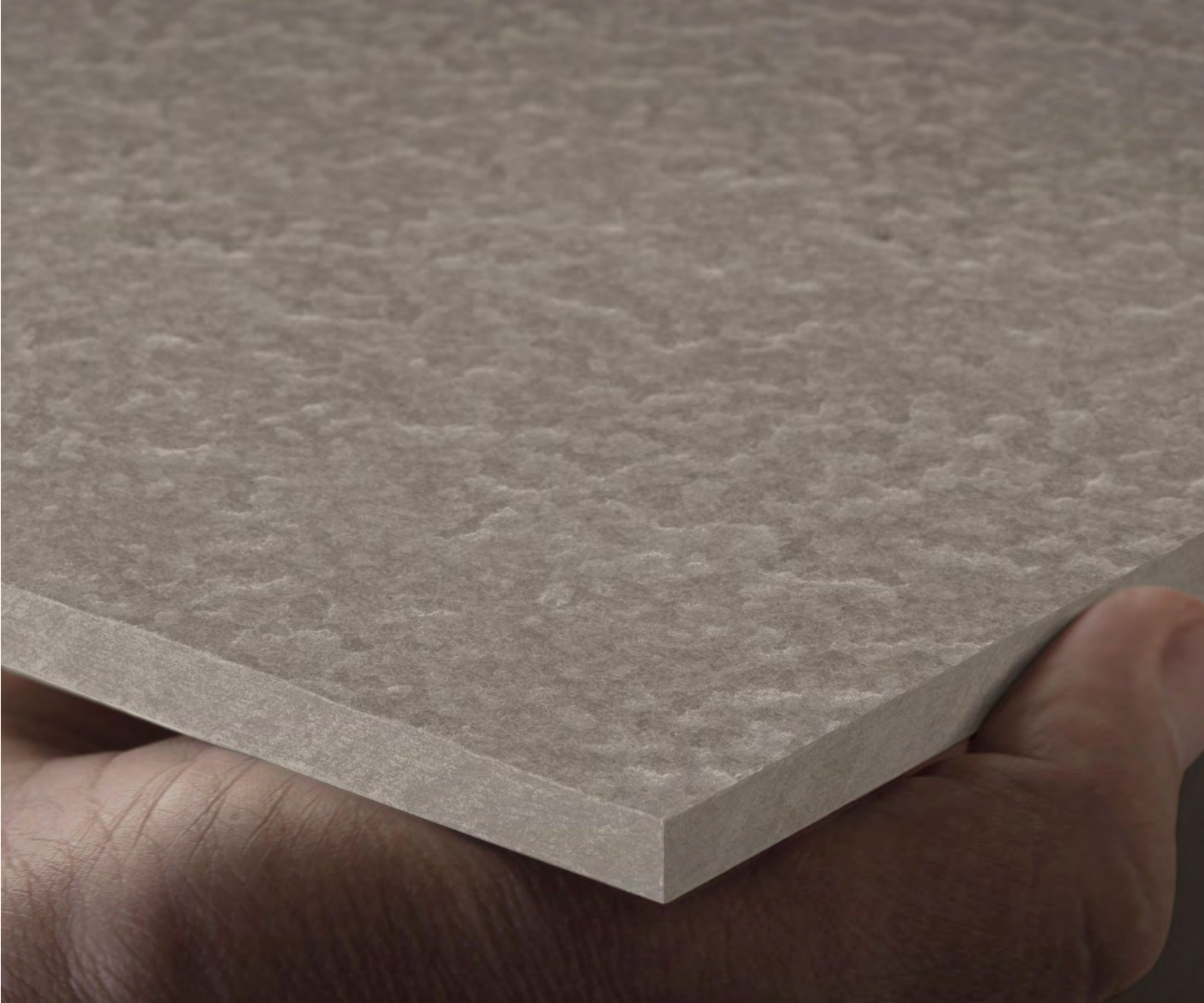
EQUITONE [textura] is a facade material, with a special coating protecting to create permanently vivid colours. It's smooth surface finish ensures a longlasting effect.

Easy-care façades with a fine-grained structure and a radiant and slightly shiny visual finish.

DIMENSIONS

	THICKNESS	WIDTH	LENGTHS
EQUITONE [linea]	8 mm - 10 mm	1220 mm	2500 - 3050 mm
EQUITONE [lunara]	8 mm - 10 mm	1220 mm	2500 - 3050 mm
EQUITONE [tectiva]	8 mm	1220 mm	2500 - 3050 mm
EQUITONE [natura]	8 mm - 12 mm	1250 mm	2500 - 3100 mm
EQUITONE [pictura]	8 mm - 12 mm	1250 mm	2500 - 3100 mm

This colour chart shows the broad range of available colours. However, a 100% accurate representation of the colours is not technically feasible in this overview. The final choice of colours needs to be based on samples. Request your sample at www.equitone.com.







Arch: Arkitekterne Bjørk & Maigård ApS, Aalborg, Denmark

www.equitone.com

Etex Nordic A/S

Vendersgade 74 | 7000 Fredericia
T: +45 7366 1999 | etexnordic-dk@etexgroup.com

Etex Norge - Filial af Etex Nordic A/S

Henriks Ibsens Gate 90 | N-0255 Oslo | Norge
T: +47 21 09 66 00 | etexnordic-no@etexgroup.com

Etex Sverige - Filial af Etex Nordic A/S

Hyllie Boulevard 35 | SE-215 32 Malmö | Sverige
T: +46 (0)10-331 2600 | etexnordic-se@etexgroup.com

 Follow us on
EQUITONE Nordic

etex inspiring ways
of living