

## Projects II

exterior

for  
people  
who  
create





## Table of Contents

- 04** Quality
- 06** Facade
- 38** Lap siding
- 42** Individualdecor
- 54** Balconies
- 60** Elements
- 66** Balustrades  
and functional structures
- 68** Sunblinds
- 72** Lettering
- 74** Outdoors
- 80** Playground & Sports facilities

**Project** \_Hotel Caldor Münchendorf  
**Country** \_Austria  
**Design** \_Söhne&Partner Architekten, S&P Architekten ZT GmbH  
**Image** \_Severin Wurnig  
**Decor** \_0077 NT



Architecture can't be invented anew. The idea is more that of transforming materials, ornaments and typologies that already exist. And with FunderMax Exterior, you'll have an innovative and sustainable building material in a multitude of variants to help you realise your idea creatively

A photograph of a modern building at dusk. The building features a large, dark, perforated metal facade that glows from interior lights. Below this is a glass-walled ground floor showing a dining area. The foreground is a gravel courtyard with some plants. In the background, there are trees and a road with light trails from passing vehicles.

for  
people  
who  
create

Max Exterior panels are duromer high-pressure laminates (HPL) in accordance with EN 438-6 Type EDF that are produced in lamination presses under great pressure and high temperature. Double-hardened acrylic PUR resins provide extremely effective weather protection that is particularly suitable for long-lasting balconies and façade claddings.



Scratch resistant



Extremely weather resistant



Easy to clean



Optimal light-fastness



Solvent resistant



Impact resistant



Easy to install



Double hardened

## Properties:

- \_\_ Extremely weather resistant  
EN ISO 4892-2
- \_\_ Optimal light-fastness  
EN ISO 4892-3
- \_\_ Double hardened
- \_\_ Scratch resistant
- \_\_ Solvent resistant

- \_\_ Easy to clean
- \_\_ Impact resistant EN ISO 178
- \_\_ Suitable for all exterior applications
- \_\_ Decorative
- \_\_ Self-supporting
- \_\_ Bending resistant EN ISO 178

- \_\_ Frost resistant -80°C to 180°C  
(DMTA-OFI 300.128)
- \_\_ Heat resistant -80°C to 180°C  
(DMTA-OFI 300.128)
- \_\_ Easy to install



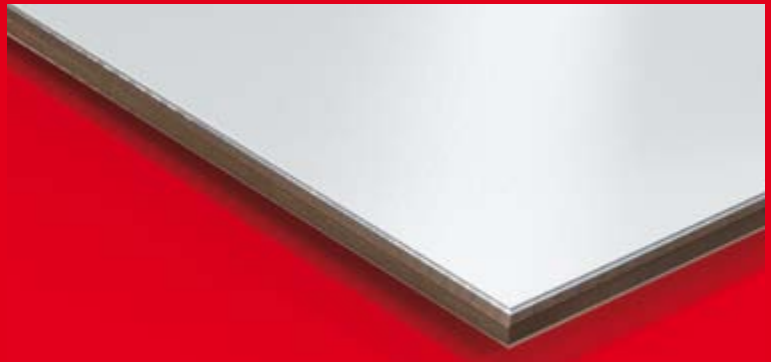
### Max Exterior F-Quality

As a standard, Max Exterior panels come with 2 decorative sides. The core is flame-retardant and the surface is light-fast. Thanks to the double-hardened resin, it is also extremely weather resistant. (Fire test EN 13501-1, B-s2, d0)



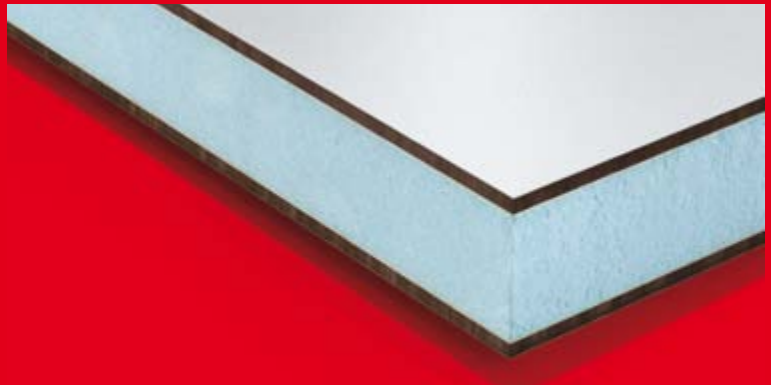
### Max Exterior Alu-Compact 42 F-Quality

The design meets F-Quality standards and is additionally provided on both sides with aluminium bands under the decorative layer. This ensures that even perforated panels are extremely stable. (Fire test EN 13501-1, B-s2, d0)



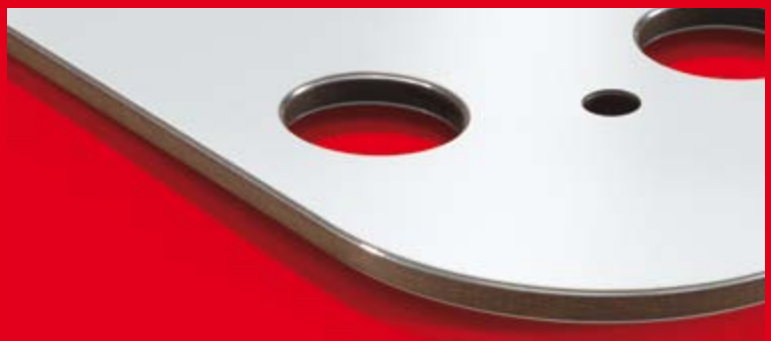
### Sandwich Elements

The Max Exterior panels in F-Quality also come sanded on just one side for use in sandwich elements.



### Processing

FunderMax offers CNC controlled processing and panel cutting. With state-of-the-art devices, it is possible to produce everything: from simple cutouts for mounting the facade panels, to intricate milling for balcony and fence elements. We can make just about anything you can dream up.



The applications shown are projects which were realised using Max Exterior. When planning and realising your own projects, please note that your local building regulations may require solutions which differ in some details.

# Facade

- \_\_structuring of large surfaces
- \_\_back-ventilation for an optimal indoor climate
- \_\_curved shapes





# Compact Exterior



**Project**\_\_Kindergarten Greifswald  
**Country**\_\_Germany  
**Design**\_\_Drebing Ehmke Architekten  
**Images**\_\_ThyssenKrupp Plastics GmbH  
**Decors**\_\_0647 NT, 0687 NT, 0851 NT

## Ovular form. Intense yellow.

The outward appearance of this day-care centre is structured by a network of panel joints defined by the horizontal and vertical axes of the facade's various openings. The entrance is the focus of an intense yellow which fades to an almost-white light yellow along the facade, drawing the gaze to the oval's flattest point at the centre.

# Facade

- \_\_warm, harmonious colour tone
- \_\_perfectly formed corners
- \_\_forward-looking heat insulation characteristics



**Project**\_\_ Single-family home  
**Country**\_\_ Germany  
**Design**\_\_ flow.studio GmbH | flow-architektur.de  
**Images**\_\_ flow.studio GmbH  
**Decor**\_\_ 0272 NT





# Compact Exterior



Look in, look out.

Building a back-ventilated facade with Max Exterior facade panels is an economically smart decision with an eye to the future. After all, you only want to build a single-family home once. The longevity and lightness of the surface will ensure that occupants stay satisfied even after decades have passed.

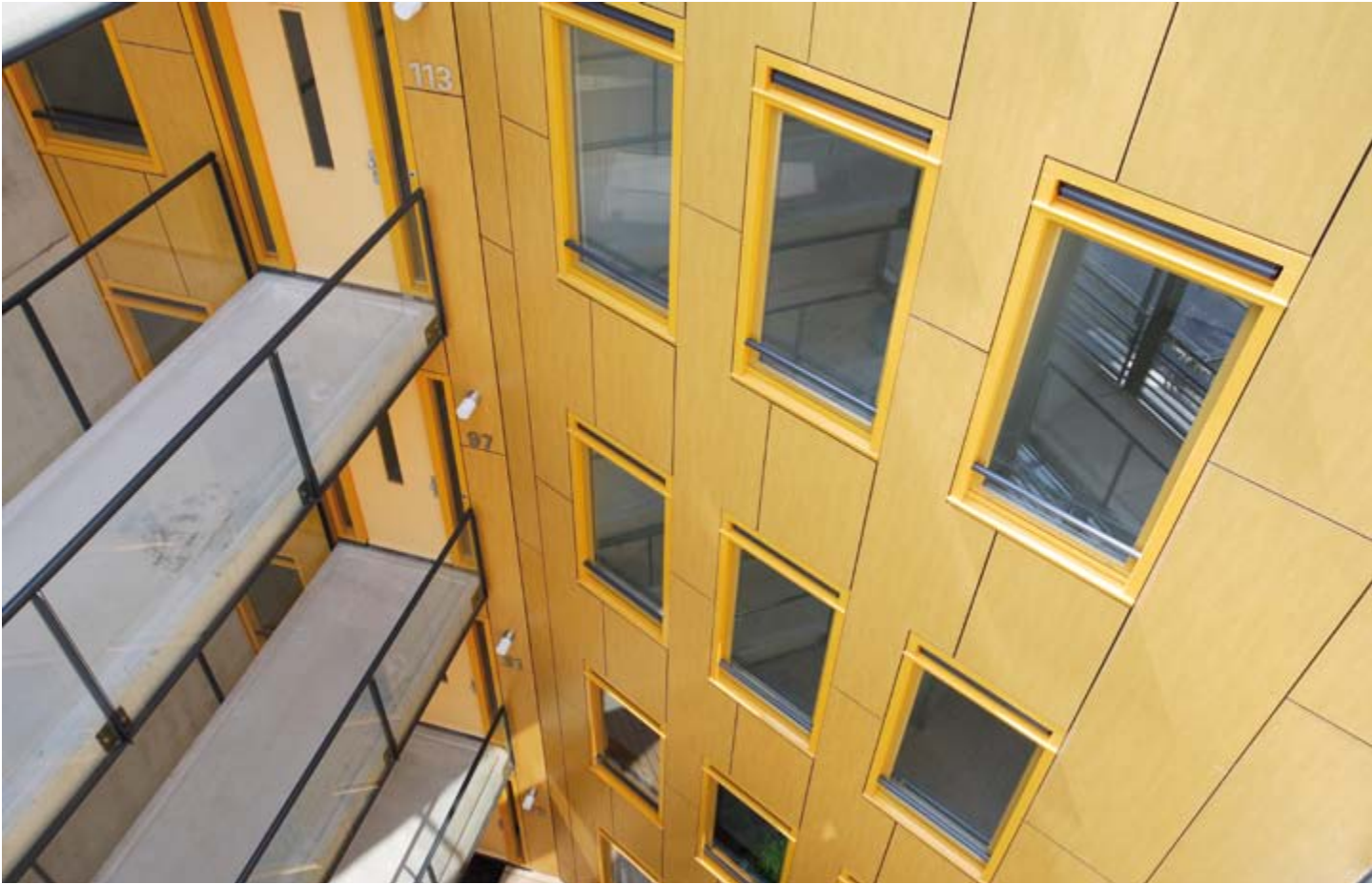
# Facade

- \_\_vertical segmentation
- \_\_large panel formats for wide surfaces
- \_\_supremely lightfast even with Creative decors





# Compact Exterior



**Project**\_\_Apartment-House De Burcht  
**Country**\_\_Netherlands  
**Design**\_\_Office for Architecture & Development Martini BV  
**Decor**\_\_0162 NT



**Optimally structured.**  
Max Exterior's five panel formats offer a high degree of creative latitude.  
The layout grid can thus be adapted to the architecture in an ideal way.

# Facade

- \_\_easy cleaning guarantees long-term attractiveness of outer surfaces
- \_\_surface is available in gloss and matt
- \_\_decor and surface result in a premium look and feel



**Project**\_\_Music-center Harmonika Müller GmbH  
**Country**\_\_Austria  
**Design**\_\_Raimund Baumgartner GmbH  
**Decor**\_\_0169 NG (Gloss)

## A facade that shines.

Particularly where sales are concerned, clean and high-quality facades attract business and contribute to a positive image. This is just another valuable side-effect of Max Exterior panels, which represent an optimum structural complement to almost any subconstruction in back-ventilated facades.



# Compact Exterior

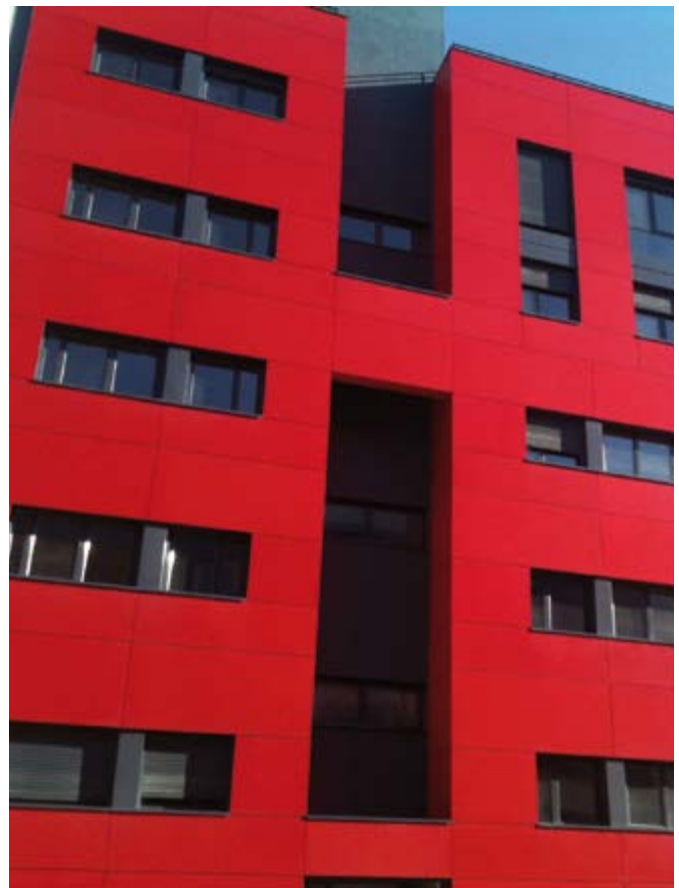


# Facade

- scratch and impact-resistance in high-wear areas
- easy cleaning guarantees long-term attractiveness of outer surfaces
- easy realisation of sculptural architecture



**Project**\_\_Home for young people Móstoles Madrid  
**Country**\_\_Spain  
**Design**\_\_Architects Rita Schlaen & Dardo Cúeno  
**Decors**\_\_0689 NT, 0077 NT





# Compact Exterior



**Project**\_\_Apartment building Madrid

**Country**\_\_Spain

**Design**\_\_Architects Jorge Javier Camacho und Mariá Eugenia Macià

**Decors**\_\_0162 NT, 0531 NT



**Clear forms. Bright colours.** Residential buildings are increasingly joining the ranks of the design objects within the context of a city's overall architecture. Unobtrusive design is a thing of the past. With their massive blocks and intersecting surfaces, these buildings appear much like sculptures in the urban environment.

# Facade

- economical installation thanks to largely uniform panel formats
- technical reliability thanks to decades of experience in exterior applications
- easily adapted to actual conditions during installation

Good all around.

Generously planned objects done with Max Exterior are effective at more than just a distance. Closer inspection of our panels reveal just how easy they are to work with during the preparatory phase—as well as on location, when it comes time to adapt them precisely to the building's existing structures.



**Project**\_\_Conservatoire Torrevieja (Alicante)  
**Country**\_\_Spain  
**Design**\_\_Architect José María Tomás  
**Decors**\_\_0027 NT, 0073 NT, 0160 NT



# Compact Exterior



**Project**\_\_Office building in Runding near Cham  
**Country**\_\_Germany  
**Design**\_\_ENGL+MEINDL ARCHITEKTEN CHAM  
**Images**\_\_[www.engl-meindl.de](http://www.engl-meindl.de)  
**Decor**\_\_0159 NT

# Facade

- tested hail-resistance
- combinable with numerous other building materials
- exciting joint patterns







**Project**\_\_Visitors' center Eisriesenwelt Werfen

**Country**\_\_Austria

**Design**\_\_Architect Werner Schmid

**Images**\_\_Angelo Kaunat

**Decor**\_\_0077 NT

### Outstanding craftsmanship.

Max Exterior panels were used in the facade of this project, which was recognised with a craftsmanship award. And it was not long before this building was put to a physical test. Severe hailstorms caused considerable damage to many of the materials employed. But not to the tested Max Exterior panels.

# Facade

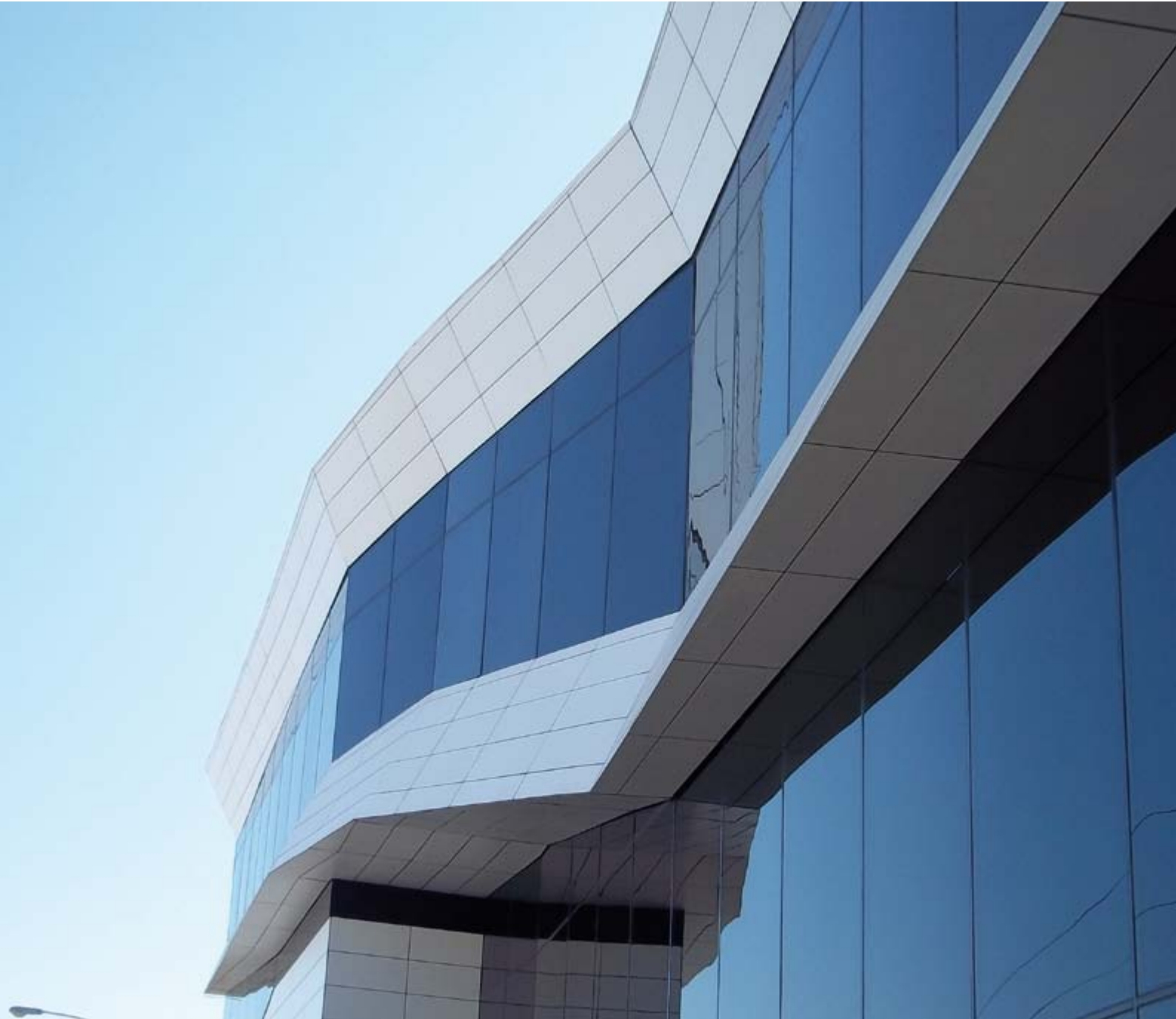
- exciting play of light and shadows
- horizontal segmentation
- creative freedom in planning



**Project**\_\_Office building Total Test  
**Country**\_\_Mexico  
**Design**\_\_Architect Lauro Villarreal Sanchez  
**Images**\_\_Juan Pablo Martin del Campo  
**Decor**\_\_0085 NT



# Compact Exterior



## **Contradictory.**

Despite its monochrome colouration, dynamic structures and overhangs allow this building to have a powerful effect on its environment. The flowing forms are further emphasised by the long and pointed shapes of the Max Exterior panels.

# Facade

- \_\_lower energy costs
- \_\_perfectly suited for restoring and expanding older buildings
- \_\_ideal building biology thanks to rear-ventilation of the facade



**Project**\_\_Residential building Pontons  
**Country**\_\_France  
**Design**\_\_Atelier BNA, B. Nicolas & G. Mercier Architects  
**Decor**\_\_0168 NT





# Compact Exterior



**Up, up, and away!**

**Who says that one can only use Max Exterior for a facade?**

**From a building's base to its balconies, from facades and roof parapets to roof soffits, Max Exterior cuts a fine figure anywhere it is used.**

**Including in roofs crowned by dormers.**

# Facade

- \_\_intense lightfast colours available
- \_\_5 formats for waste minimisation
- \_\_trimming service for timely execution







**Project**\_Blumenhalle St. Veit/Glan  
**Country**\_Austria  
**Design**\_frediani+gasserarchitettura  
**Images**\_Ferdinand Neumüller  
**Decors**\_0674 NT, 0689 NT, 0691 NT, 0702 NT

### A classy box.

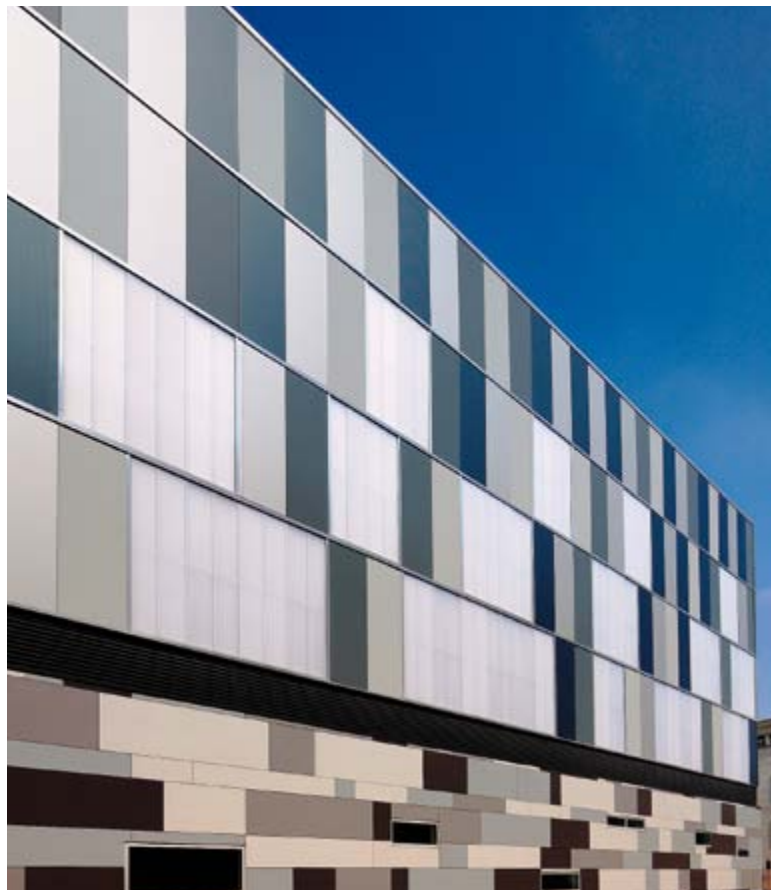
That was the gist of comments in the specialist press when the Blumenhalle was opened. But this building is so much more. It is a meeting place and event centre at which traditional goings-on frequently come together with the modern, intensely coloured architecture. For example when the foyer of the Blumenhalle is opened up to the historic Wiesenmarkt.

# Facade

- \_\_multiple shades of grey loosen up large surfaces
- \_\_horizontal segmentation with appropriate optional profiles
- \_\_combines with all common subconstructions



**Project**\_\_Air France building  
**Country**\_\_France  
**Design**\_\_Agence Valero Gadan  
**Images**\_\_Patrick P. Muller  
**Decors**\_\_0070 NT, 0074 NT, 0075 NT





# Compact Exterior

**Artistic.**

One could interpret it as the tasteful realisation of a painting by Piet Mondrian.

Or one could view it as a puzzle. Max Exterior inspires imaginative solutions with something for everybody and for every point of view.

# Facade

- \_\_uniform subconstruction regardless of decor
- \_\_prevention of thermal bridges
- \_\_easy custom trimming with clean edges



**Project**\_\_ Tower Block Marseille  
**Country**\_\_ France  
**Design**\_\_ Tectum Architecture  
**Decors**\_\_ 0075 NT+ Ice, 0085 NT, 0689 NT



# Compact Exterior



Project\_Buhler  
Country\_India  
Design\_VSDP  
Decors\_\_0085 NT, 0328 NT

# Facade

- Dualis Ice combinations for metallic effects
- trimming for an exact fit can be done on location with no difficulty
- double-hardened surface guarantees long-lasting beauty





# Compact Exterior



**Project**\_ Sparmarkt, Marchtrenk

**Country**\_ Austria

**Design**\_ archinauten - dworschak + mühlbacher architekten zt gmbh

**Images**\_ FunderMax/???

**Decor**\_ 0085 + Dualis Ice

## Pure dynamism.

The building site is situated on a heavily trafficked roadway, with vehicles moving past the building at high speeds—a dynamic which the building's architecture takes up. The facade's clear lines support visibility and recognisability. A striking feature is the flowing transition between the facade and the projecting roof, rendering the building's shell a statement that can be seen far and wide.

# Facade

- \_\_extreme durability and scratch-resistance
- \_\_simple to clean
- \_\_economical installation thanks to large formats



**Peak performance.**  
Upliftingly beautiful and perfectly formed. It's how every entrepreneur would like his business's entrance to be. With the appropriate colour accents in the right places, Max Exterior facades energise the shopping experience.



# Compact Exterior



**Project**\_\_Wissol petrol station, „Smart“ Market, Akhaltsikhe  
**Country**\_\_Georgian Republic  
**Design**\_\_Architect Tengiz Kvantaliani, Studio ARCI  
**Realisation**\_\_Eurofasad Ltd.  
**Decors**\_\_0706 NT, 0736 NT



# Facade

- \_\_environmentally friendly production of Max Exterior panels
- \_\_long-lasting and maintenance-free
- \_\_FSC and PEFC-certified



**Project**\_\_Operational plant ZOERKLER GEARS GmbH & Co KG  
**Country**\_\_Austria/Burgenland  
**Design**\_\_Architekten Mühlbacher Marschalek in Kooperation mit Marschalek Architekten ZT Ges.m.b.H.  
**Images**\_\_Andreas Buchberger  
**Decors**\_\_0074 NT, 0075 NT

**Corporate architecture meets world cultural heritage.**

The assignment: to combine a commercial building's architecture with a specific quality of life—as a reflection of a company that can combine perfection and innovation with the province of Burgenland's culture and typical joie de vivre. To visualise international high-tech on the outside while at the same time creating a building that is cost-efficient, sustainable and precise in its construction.

Extremely high standards which should also be upheld and made visible by the building's architectural concept. Including the facade with Max Exterior.



# Compact Exterior



# Facade

- \_extraordinary surface effects thanks to Authentic panels
- \_sustainably economical
- \_high rigidity allows the use of relatively thin panels



## **Award-winning unity.**

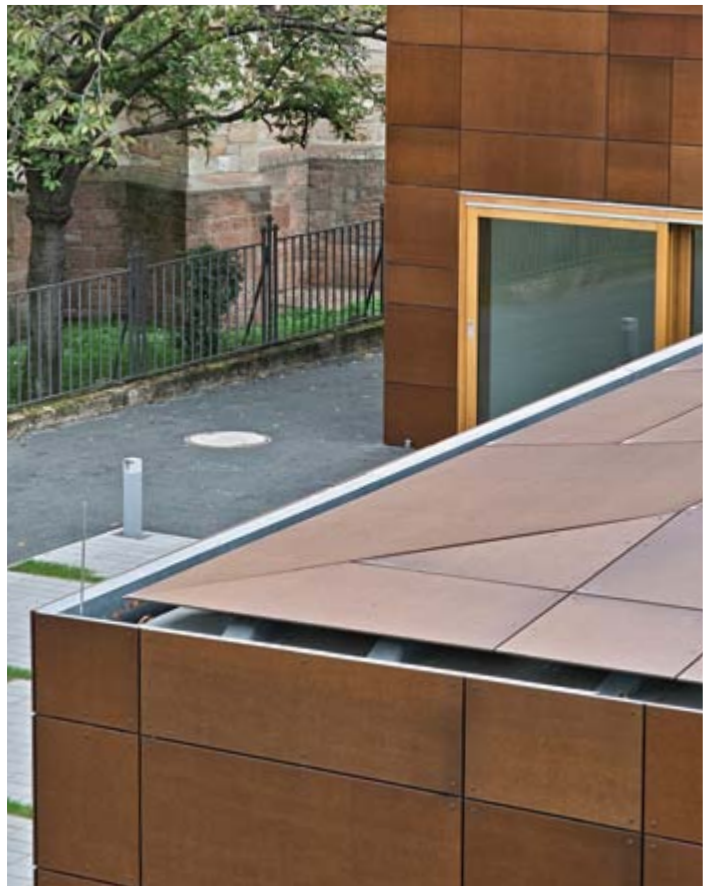
Embedded in the context of the rectory and the church, which is protected as a historic landmark, this community centre forms a harmonious urban ensemble. Alongside an entrance square toward the street, the building formulates a protected courtyard upon which the community meeting hall is oriented. The monolithic approach of unified covering for the building's facade and the flat, slanted roofs has been realised in a consistent manner.



# Compact Exterior



**Project**\_\_Community center, Ginsheim-Gustavsburg  
**Country**\_\_Germany  
**Design**\_\_Hille Architects  
**Images**\_\_Horst Goebel  
**Decor**\_\_AUTN Authentic Nature



# Lap siding

- \_\_prefabricated elements
- \_\_well-conceived fastening system
- \_\_accessories available as part of the product range



**Project**\_\_Office building Lallemand Fermetures  
**Country**\_\_France  
**Design**\_\_Alain Michel, Architect  
DPLG & Eric LIEGEOIS, constructor  
**Decor**\_\_0601 NT



# Compact Exterior



**Project**\_\_Plate-Forme Industrielle Courrier (P.I.C.)  
**Country**\_\_France  
**Design**\_\_SERAU Architecture  
**Decor**\_\_0161 NT



# Lap siding

- \_\_bendable over large radiuses
- \_\_prefabrication makes possible quick installation
- \_\_stock program available



**Project**\_\_Hall of residence  
**Country**\_\_France  
**Design**\_\_Atelier Empreinte  
**Constructor:** Logirem  
**Decor**\_\_0169 NT



# Compact Exterior



**Project**\_\_JUFA Campus Futura Bleiburg Sport Resort  
**Country**\_\_Austria  
**Design**\_\_Architecture firm Frei & Wurzrainer ZT GmbH  
**Decors**\_\_0077 NT, 0689 NT

## Innovative technology.

A model project in terms of energy efficiency—both on the building's inside as well as on the outer shell with its Max Exterior lap siding elements. Entailing the project's virtually automatic nomination for the Austrian Climate Protection Award.

# Individualdecor

\_\_factory trimming and processing guarantees a high degree of exactitude

\_\_all-over individuality

\_\_covered, invisible fastenings



**Project**\_\_Clientis Bank Leerau

**Country**\_\_Switzerland

**Design**\_\_Architektengemeinschaft 4

**Images**\_\_René Rötheli

**Decor/Design**\_\_Individualdecor/Atelier 74

**Taking its cue from nature.**

This facade's unusual appearance plays with the stimulating effect of viewing it from various distances. Viewed close up, it gives rise to associations with a forested landscape, while from far off the strongly pixelated floral pattern blends smoothly. The black-and-white pixelation of the park-like ground surfacing outside corresponds to the facade's theme.



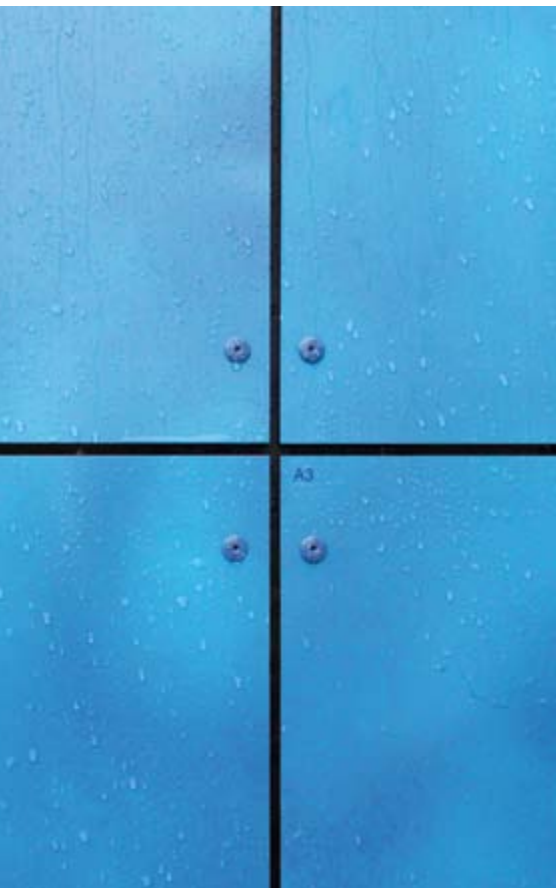
# Compact Exterior





# Individualdecor/Art-Decor

- \_\_motifs can cover multiple panel formats
- \_\_wide range of available art decors
- \_\_art decors allow easy realisation of colour variants



**Project**\_\_Röthlheimbad with Hannah-Stockbauer hall, Erlangen  
**Country**\_\_Germany  
**Design**\_\_Wiesneth Architekten Fürth  
**Decor**\_\_Individualdecor

**Suggestively inviting.**  
A symbolically powerful facade with a signalling effect. Individualdecors allow Max Exterior to achieve just that. Even on the outside, you see what lies behind. And you still get the invisible benefit of Max Exterior's considerable inner values.



# Compact Exterior



**Project**\_\_Home of generations Eggersdorf  
**Country**\_\_Austria  
**Design**\_\_Architect Gerhard Mitterberger  
**Decor**\_\_P947 NT (Art Dekor)



# Individualdecor

\_\_decors made to resemble nature, in brilliant colours

\_\_superlative-quality printing

\_\_individual decors possible on even just one panel



**Project**\_\_Einfamilienhaus und Büro

**Country**\_\_Austria

**Design**\_\_Architekt DI Wolfgang Holzer

**Image**\_\_Architekt DI Wolfgang Holzer

**Decor**\_\_Individualdecor

**Moving up in the world.**

After 50 years, an old building was given a wood-frame addition on top. Its new back-ventilated facade with Max Exterior creates ideal conditions for lowering energy costs. And the latitude for design creativity is shown by the individual design of the facade panels as well as in the construction itself. The south-facing facade projection on the top floor also provides protection from the sun.





**Project**\_Kindergarten „Old Argonner“ Hanau  
**Country**\_Germany  
**Design**\_AIP Arbeitsgemeinschaft Integrierte Planung GmbH,  
Hanau Immobilien- und Baumanagement (constructor)  
**Decor**\_Individualdekor



# Individualdecor

- \_\_high impact-resistance thanks to homogenous core
- \_\_very dark colours possible
- \_\_long-lasting resistance to sun and rain



**Project**\_\_Ratio Shopping Center Baunatal  
**Country**\_\_Germany  
**Design**\_\_Arge Ratio-Land Baunatal  
MBN Bau AG - Telos Real GmbH + Co.KG  
**Images**\_\_Quabbe + Tessmann/ThyssenKrupp Plastics  
**Decors**\_\_0742 NT, Individualdecor





**Project**\_Town hall Fonbeauzard

**Country**\_France

**Design**\_Architect Axel Lettelier

**Images**\_M. Sierpinski

**Decor**\_Individualdecor

### Great personalities.

In architecture, the human factor plays a major role. So almost automatically, the ability to individualise which Max Exterior panels provide is put to use in public buildings and shopping centres—everywhere large numbers of people come together.

# Individualdecor

\_\_panels of up to 4 m in length are possible without division

\_\_low weight is structurally advantageous

\_\_well-chosen decors make a high class look-and-feel





# Compact Exterior



**Project**\_\_Best Western Premier Hotel Krakau  
**Country**\_\_Poland  
**Design**\_\_DDJM architecture firm  
**Decor**\_\_Individualdecor

**The premium category.**

Only the best for the best. Elegant motifs and high-quality features—to be found in Max Exterior panels combined with individual decors. Whether among business travellers or fans headed to a football event, the impression will be first class.

# Individualdecor

- \_\_from graphic motifs to photorealistic ones, anything is possible
- \_\_corporate design can be realised perfectly
- \_\_individual design solutions



**Project**\_\_Optimum Outlet  
**Country**\_\_Turkey  
**Design**\_\_Renaissance Development  
**Decor**\_\_Individualdecor





# Compact Exterior



**Project**\_\_SK Scheidel Kunststoffe Villingendorf  
**Country**\_\_Germany  
**Design**\_\_Gruppe70, Thomas Scherlitz, Villingen-Schwenningen  
**Decor**\_\_Individualdecor

## Heavy traffic.

Whether it's the unified design of facades for highly frequented shopping centres, or for the illustration of a passion for flying on someone's own facade at home— with Max Exterior panels and individual decors, it's always possible to make a harmonious overall impression that extends across all panel formats.

# Balconies

- \_\_lean, airy look with high break-resistance
- \_\_easy processing makes possible complicated detailed solutions
- \_\_large areas are enlivened with small panel divisions





# Compact Exterior



**Project**\_\_Pantin hall of residence  
**Country**\_\_France  
**Design**\_\_OFIS Architects  
**Decor**\_\_AUTN Authentic Nature





# Balconies

- \_\_economical large fastening distances thanks to high break-resistance
- \_\_many fastening variants possible
- \_\_choose from over 100 decors



**Project**\_\_Les Jardins d'Alembert  
**Country**\_\_France  
**Design**\_\_Architects Lacaille and Lassus  
**Decor**\_\_0803 NT



# Compact Exterior



**Project**\_\_passiv apartment building Iodenareal bauteil in 144  
**Country**\_\_Austria  
**Design**\_\_teamk2 [architects] ZT GMBH  
**Decors**\_\_0027 NT, Individualdecor

**Diversity for all occasions.**  
No matter whether wood decors, plain colours or creative decors: there have never been this many decors available for exterior use. And if that's not enough, FunderMax offers „Individualdecor“ to get it just right.

# Balconies

- \_\_easily combinable thanks to coordinated range of colours
- \_\_front side coloured and rear side in white upon request
- \_\_decades of durability thanks to proven material



**Project**\_\_Na Križovatkách Bratislava  
**Country**\_\_Slovakia  
**Decors**\_\_0075 NT, 0736 NT

**Upgraded.**  
Balconies are a plus not only for residents' quality of life at home, but also for the outward appearance of this apartment building. Here, the building's outer cladding has a special role to play. It should be decorative as well as safe and secure.





# Compact Exterior



**Project**\_\_ Apartement building Olomouc  
**Country**\_\_ Czech Republic  
**Decor**\_\_ 0674 NT



# Elements

- \_\_suitable for all exterior applications
- \_\_aluminium layers make for an even more stable material
- \_\_high-quality prefabricated parts thanks to CNC processing



**Project**\_\_Sunil Saraogi's Residence  
**Country**\_\_India  
**Design**\_\_GNA  
**Decor**\_\_0161 NT

**A question of perspectives.**

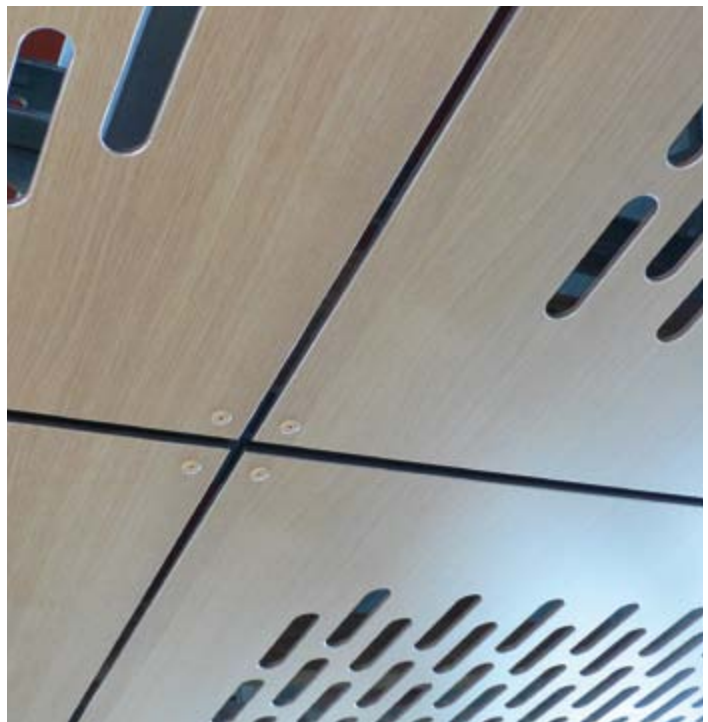
Are roofs and porches only for protection? Or can they be more? A glance upward reveals interesting possibilities. In addition to decorative surfaces, Max Exterior also offers other design options. One can engrave its surface, cut out motifs, cut slits into aluminium-reinforced panels, and much more...



# Compact Exterior



**Project**\_Newmarket Railway Station, Auckland  
**Country**\_New Zealand  
**Design**\_Opus International Consultants Ltd.  
**Images**\_John Gibbons  
**Decor**\_0125 NT





# Elements

- \_\_complex cut-out motifs achieved with CNC processing
- \_\_a variety of decors and decor variants
- \_\_clean details



**Project**\_\_Apartment building Grand Synthe  
**Country**\_\_France  
**Design**\_\_Architects SEURA  
(Florence Bougnoux, Jean-Marc Fritz, David Mangin)  
**Decor**\_\_0792 NT



# Compact Exterior



**Project**\_\_Concecration hall Wels  
**Country**\_\_Austria  
**Design**\_\_Delta Projektoconsult  
**Decor**\_\_0158 NT

# Elements

- \_\_easy processing of Max Exterior panels
- \_\_cleanly cut curves and cut-outs possible
- \_\_backlit elements and facade panels



**Project**\_\_Shiva Kumar's Residence  
**Country**\_\_India  
**Design**\_\_Nagesh Verma  
**Decor**\_\_0161 NT

**Individuality regardless of the decor.**

Individual decors are a very good thing. But design is done first and foremost with shapes, from atypical shapes to those of the basic geometric variety. Thanks to its physical characteristics, Max Exterior offers these possibilities in nearly all variants—some of which have been used in award-winning urban renewal projects.





**Project**\_\_Urban renewal project in Vienna

**Country**\_\_Austria

**Design**\_\_Ing. Fritz Brandstätter Bauplanungs- & Management GmbH

**Images**\_\_Ing. Fritz Brandstätter Bauplanungs- & Management GmbH

**Decor**\_\_0793 NT



# Balustrades and functional structures

- \_\_with aluminium layers reinforced panels for creative solutions
- \_\_orientation system based on the use of varying panel decors
- \_\_high-quality prefabricated parts thanks to CNC processing



**Project**\_\_Open air bath Mitterdorf  
**Country**\_\_Austria  
**Design**\_\_DI PAJDUCH ARCHITEKTUR -ZT GMBH Mürzzuschlag  
**Decor**\_\_0328 NT



**Project**\_\_University and Research Center Tulln  
**Country**\_\_Austria  
**Design**\_\_Architekt Podsedensek ZT  
**Decor**\_\_0325 NT



# Compact Exterior



**Project**\_Local Poubelle „Résidence l'Abbaye“ St Cyr Ecole  
**Country**\_France  
**Design**\_Tectum  
**Decor**\_0601 NT



**Project**\_Music- and Primary School Wördern  
**Country**\_Austria  
**Design**\_Architect Gottfried Buresch  
**Decor**\_0168 NT

# Sunblinds

- \_\_many fastening options on both frames and rails
- \_\_adaptation to regional characteristics using individual cut-out styles
- \_\_diverse decors



**Project**\_\_Apartment building Saint Quen  
**Country**\_\_France  
**Design**\_\_Agency Rafatdjou Makan  
**Decor**\_\_0168 NT





# Compact Exterior



**Project**\_\_Residence hall Noyer Doré  
**Country**\_\_France  
**Design**\_\_Bosom & Onate and NZA Architecture,  
Constructor: Antony Habitat  
**Decor**\_\_0601 NT

**Highly varied styling methods.**

A both attractive and striking appearance. Architects sometimes achieve this by the use of sliding elements or shutters on buildings. The decors and easily-to-process panels from Max Exterior allow elements with very personal designs to be built, taking a project beyond the realm of prefabricated products.

# Sunblinds

- \_\_highly stable material makes possible high transparency
- \_\_functional wind protection and privacy in a sophisticated design
- \_\_long fastening intervals lend this construction a lightweight appearance



**Project**\_Car park Voiron  
**Country**\_France  
**Design**\_GTB Architects  
**Decor**\_0168 NT



# Compact Exterior



**Project**\_\_Aural Bergson - Dialysis Center  
**Country**\_\_France  
**Design**\_\_Architects office Gilch-Kalk-Gilch  
**Images**\_\_O. Mirguet  
**Decor**\_\_0162 NT

## The dark side.

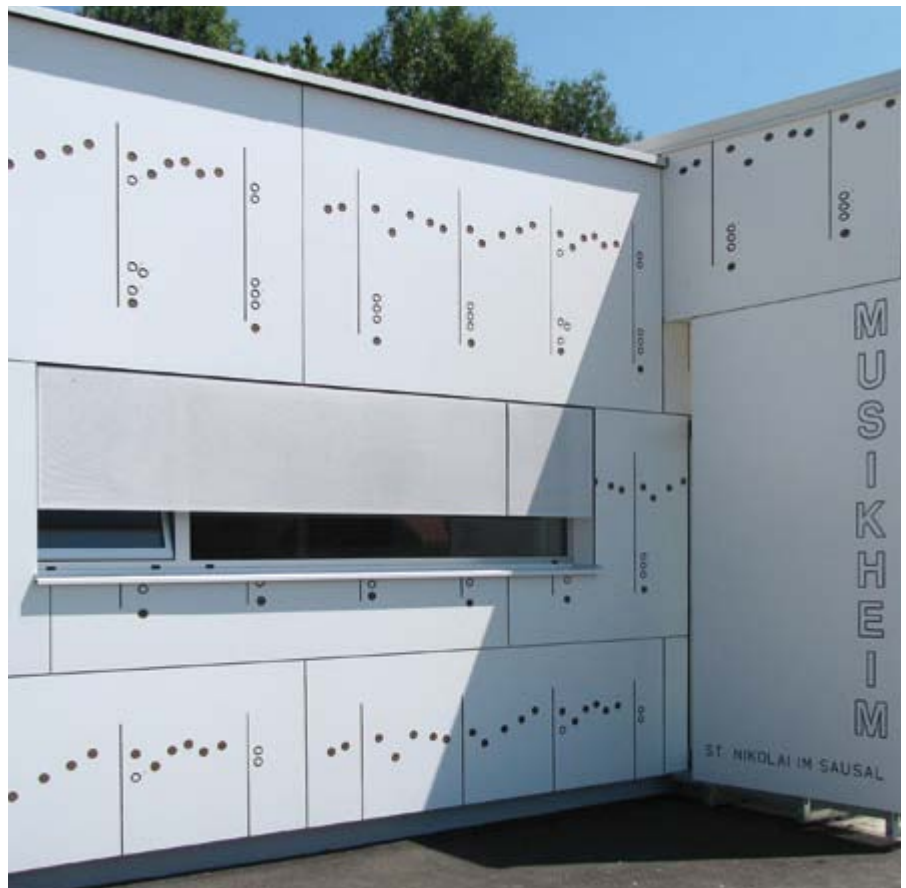
This concept is unknown to Max Exterior panels. Durable, stable elements provide effective protection from the sun and the weather. Whether vertical or horizontal, fixed or moving.

# Lettering

- \_\_cut-outs are no problem for Max Exterior panels.
- \_\_cut-outs in the decor layer does not diminish the panel's quality
- \_\_individual, weather-resistant digital printing



**Project**\_\_ Showroom Carpentry Helmer  
**Country**\_\_ Austria  
**Design**\_\_ Architects Amon & Partner ZT-GmbH  
**Decor**\_\_0037 NT



**Project**\_\_ Music center of St. Nikolai  
**Country**\_\_ Austria  
**Design**\_\_ Architect Gerhard Mitterberger  
**Decors**\_\_0085 NT



# Compact Exterior



**Project**\_\_Museum Erding  
**Country**\_\_Germany  
**Design**\_\_Walbrunn Architects, Bockhorn//Thilo Brussig Szenarien, Munich  
**Decors**\_\_Individualdecor



**Project**\_\_Informative sign C. A Sochaux-Montbéliard  
**Country**\_\_France  
**Design/Realisation**\_\_3D INCRUST®  
**Decor**\_\_Individualdecor

**Preserved for posterity.**

Just like a museum has the job of preserving things for future generations, Max Exterior provides logos, lettering, and maps of cities and cycling routes with decades of protection from bleaching and weathering, and even from graffiti. This is possible thanks to these panels' double-hardened surface and optimally lightfast quality.



# Outdoors

\_\_easy processing makes possible a wide array of shapes

\_\_diverse fastening options

\_\_lasting resistance to sun and rain





# Compact Exterior



**Project**\_\_Pergola House Z  
**Country**\_\_Austria  
**Design**\_\_heri & salli (Heribert Wolfmayr and Josef Saller)  
**Images**\_\_© paul ott photographs  
**Decors**\_\_0085 NT

A different kind of lattice fence. The basic idea of a rustic lattice fence was used to create a cocoon-like steel frame around a swimming pool. With suspended Max Exterior panels and more-or-less function-dependent components, the parametrically organised space serves to sum up the possibilities of surfaces that can be used and experienced.

# Outdoors

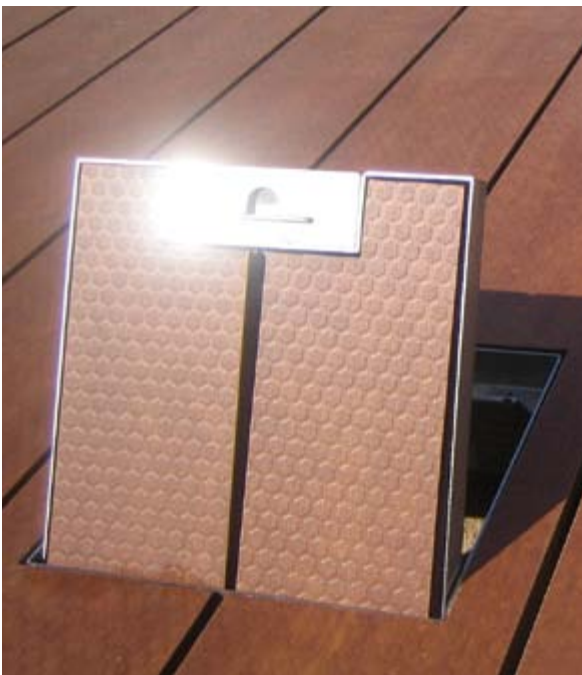
- \_\_easy to clean
- \_\_surface variants from matt to glossy
- \_\_non-slip Hexa surface



**Project**\_\_KARAS Grill Bettenhausen Kassel  
**Country**\_\_Germany  
**Design**\_\_Metall 24 KG Kassel  
**Images**\_\_SKV GmbH/Peter Krause  
**Decor**\_\_1260 NT



# Compact Exterior



## Skid-resistant.

A surface that offers a firm foothold. The Hexa surface from Max Exterior. Alongside this quality, these Max Exterior floorboards and waffle-slabs also feature a specially developed fastening system as well as the absence of splinters and zero maintenance requirements.

**Project**\_\_Terrace in a private house

**Country**\_\_Austria

**Design**\_\_Master builder Ing. Eduard Güldner

**Realisation**\_\_Holz Thurner, Kötschach/Mauthen

**Decors**\_\_0161 NH - Hexa

# Outdoors

- \_\_high degree of prefabrication ensures perfect quality
- \_\_material stability thanks to aluminium inserts makes possible large cut-outs
- \_\_double-hardened surface guarantees lasting beauty



**Project**\_\_Brigade Gateway  
**Country**\_\_India  
**Design**\_\_Brigade Group (inhouse architects)  
**Decor**\_\_0741 NT

A different kind of landscaping.  
Whether in an urban environment or surrounded by nature, Max Exterior also cuts a good figure in unusual applications. For every situation, there is the appropriate decor combined with a lightfast surface.





**Project**\_\_Memorial place Nikola Tesla, Smiljan

**Country**\_\_Croatia

**Design**\_\_Timotej Kritovac d.i.a.

**Decors**\_\_0160 NT, 0161 NT, 0168 NT

# Playgrounds and sports facilities

- \_\_break-resistant and stable
- \_\_weather-resistant
- \_\_CNC-controlled processing



**Project** \_Children's playground Asterix Park\*  
\*with kind permission of SAS QUALI-Cité  
**Country** \_France  
**Decors** \_\_0803 NT, 0717 NT, 0736 NT

Where life is colourful and wild.  
When it comes to supporting happy kids, young sports fans and athletes in their emotions, the Max Exterior collection has the right decor for everybody.  
So which one will it be?



# Compact Exterior



**Project**\_\_Bavina - sport facility and residence hall  
**Country**\_\_Czech Republic  
**Design**\_\_GEBAS Atelier  
(Architect Miroslav Gebas/Architect Tomáš Vymetálek)  
**Decors**\_\_wide choice from the Max Exterior range



# Sports facility

- \_\_structuring of large surfaces
- \_\_emphasis on the architecture itself thanks to narrow panel formats
- \_\_lean look with high break-resistance



**Project**\_\_ Stadium Slavia Praha - Eden  
**Country**\_\_ Czech Republic  
**Design**\_\_ Omicron-K  
**Decors**\_\_ 0160 NT, 0169 NT, 0674 NT

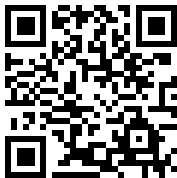
**Resists wind and weather.**

High performance is required of more than just athletes—facade panels are also expected to exceed the norm. Max Exterior's rugged durability is ensured by the patented, double-hardened NT surface, which lets the facade panels provide a high degree of weather-protection.



# Compact Exterior





**FunderMax France**

3 Cours Albert Thomas  
F-69003 LYON  
Tel.: +33 (0) 4 78 68 28 31  
Fax: +33 (0) 4 78 85 18 56  
infofrance@fundermax.biz  
www.fundermax.at

**FunderMax India Pvt. Ltd.**

504, 5th floor, Brigade Towers  
135, Brigade Road  
IND-560025 Bangalore  
Tel.: +91 80 4111 7004  
Fax: +91 80 4112 7053  
officeindia@fundermax.biz  
www.fundermax.at

**JAGO AG**

Industriestrasse 21  
CH-5314 Kleindöttingen  
Tel.: +41 (0) 56-268 81 31  
Fax: +41 (0) 56-268 81 51  
info@jago.ch  
www.jago.ch

**ISOVOLTA S. A. U.**

Avda. Salvatella 85-97  
Poligono Industrial Can Salvatella  
E-08210 Barberá del Vallés  
Tel.: +34 937 297 550  
Fax: +34 937 190 511  
info@isovolta.es  
www.isovolta.es

**ISO-MAX Spółka Akcyjna**

ul. Rybitwy 12  
PL-30722 Krakau  
Tel.: +48-12-65 34 528  
Fax: +48-12-65 70 545  
biuro@iso-max.com.pl  
www.iso-max.com.pl

**FUNDERMAX**®

FunderMax GmbH  
Klagenfurter Straße 87-89  
A-9300 St. Veit / Glan

Tel.: +43 (0) 5/9494-0  
Fax: +43 (0) 5/9494-4200  
office@fundermax.at  
www.fundermax.at